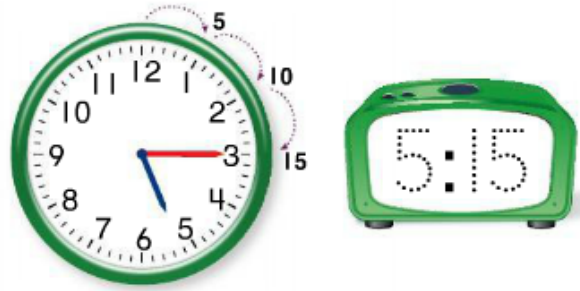


功课和练习 第8-6课

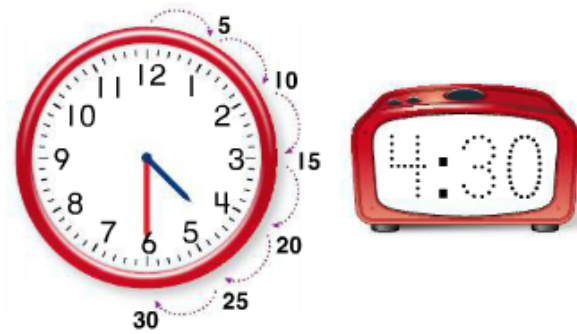
以五分钟为单位 说出时间

再看! You can use two kinds of clocks to tell time.

The **minute hand** moves from mark to mark in 1 minute.
There are 5 moves between each number. So, the minute hand moves from number to number in 5 minutes.



There are 30 minutes in a half hour and 60 minutes in an hour.
The **hour hand** moves from number to number every 60 minutes.



家庭活动 Draw three clock faces showing 3:20, 10:50, and 7:05. Have your child tell you the time each clock shows.



Count by 5s. Write the time.



3. © **MP.8 Generalize** The time is shown on the clock below.



Draw the time on the clock in the box at the right. Then complete each sentence.

The minute hand is pointing to the _____.



The hour hand is between _____ and _____.

Higher Order Thinking Each riddle is about a different clock. Solve the riddle and write the time.

4. My hour hand is between the 3 and the 4.
My minute hand is pointing to the 7.

What time do I show? _____

5. My hour hand is between the 5 and the 6.
My minute hand is pointing to the 4.

What time do I show? _____

6. My hour hand is between the 11 and the 12.
My minute hand is pointing to the 3.

What time do I show? _____

7. My hour hand is between the 1 and the 2.
My minute hand is pointing to the 9.

What time do I show? _____

8. © **Assessment** The clock shows the time that Sharon starts to walk to the library. The walk takes 10 minutes. At what time does Sharon get to the library?

5:00 5:10 5:20 5:30
(A) (B) (C) (D)

